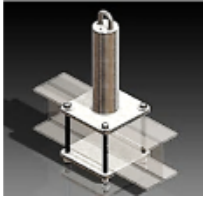




PART NUMBER	PRODUCT NAME	BASE SIZE (in)	POST HEIGHT (in)	FINISH
				(P)POWDER COAT (G)GALVANIZED (SS)STAINLESS STEEL



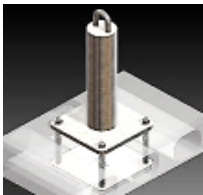
BW-500*	Beam Wrap Anchor	8x8x5/8	8"-16"	P/G/SS
BW-700*	Beam Wrap Anchor	10x10x5/8	8"-20"	P/G/SS
BW-900*	Beam Wrap Anchor	12X12x3/4	8"-24"	P/G/SS

*\*SAMPLE: BW-508G HAS A 8X8X5/8 BASE 8" POST GALVANIZED*



BT-100*	Single Bolt Through Anchor	10x10x5/8	8"-18"	P/G/SS
BT-200*	Single Bolt Through Anchor	12x12x3/4	18"-24"	P/G/SS

*\*SAMPLE: BT-112SS IS A 10X10X5/8" BASE AND 12" POST STAINLESS STEEL*



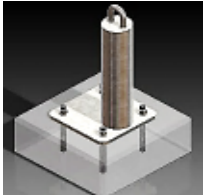
BT-300*	Bolt Through Anchor (4)	10x10x5/8	8"-18"	P/G/SS
BT-400*	Bolt Through Anchor (4)	12x12x3/4	18"-24"	P/G/SS

*\*SAMPLE: BT-312P IS A 10X10X5/8" BASE AND A 12" POST AND POWDERCOATED TO CUSTOMER SPECS*



AA-100*	Adhesive Anchor	10x10x5/8	8"-18"	P/G/SS
AA-200*	Adhesive Anchor	12x12x3/4	18"-24"	P/G/SS

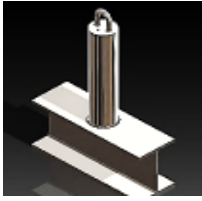
*\*SAMPLE: AA-108G IS A 10X10X5/8" BASE WITH AN 8" POST GALVANIZED*



AAO-100*	Offset Adhesive Anchor	10x10x5/8	8"-18"	P/G/SS
AAO-200*	Offset Adhesive Anchor	12x12x3/4	18"-24"	P/G/SS

*\*SAMPLE: AAO-112G IS A 10X10X5/8" BASE WITH A 12" POST GALVANIZED*

PART NUMBER	PRODUCT NAME	BASE SIZE (in)	POST HEIGHT (in)	FINISH <small>(P)POWDER COAT (G)GALVANIZED (SS)STAINLESS STEEL</small>
-------------	--------------	----------------	------------------	---



WO-100*	Weld On Anchor	N/A	8"-24"	P/G/SS
---------	----------------	-----	--------	--------

*\*SAMPLE: WO-110SS IS A 10" POST STAINLESS STEEL*



Horizontal lifeline Tab can be added to any of our standard anchors. Add HL to the end of the part number to include the horizontal lifeline tab. Add HL2 to the end of the part number to add a tab to both sides of the anchor.

PART NUMBER	PRODUCT NAME	BASE SIZE (in)	POST HEIGHT (in)	FINISH <small>(P)POWDER COAT (G)GALVANIZED (SS)STAINLESS STEEL</small>
-------------	--------------	----------------	------------------	---



WA-100	Single Bolt Wall Anchor	4x6x1/2	N/A	P/G/SS
--------	-------------------------	---------	-----	--------



WA-201	Two Bolt Adhesive Anchor Horizontal	4x6x1/2	N/A	P/G/SS
--------	-------------------------------------	---------	-----	--------





WA-202	Two Bolt Adhesive Anchor Vertical Hoop	4x6x1/2	N/A	P/G/SS
--------	--	---------	-----	--------



WA-300	Weld On Wall Anchor	4x6x1/2	N/A	SS HOOP RAW PLATE
--------	---------------------	---------	-----	-------------------



WA-400	Four Bolt Adhesive Anchor	4x6x1/2	N/A	P/G/SS
--------	---------------------------	---------	-----	--------

	PART NUMBER	PRODUCT NAME	BASE SIZE (in)	POST HEIGHT (in)	FINISH
					(P)POWDER COAT (G)GALVANIZED (SS)STAINLESS STEEL
	CW-300*	Column Wrap Anchor	3x(4-10)x1/2	N/A	P/G/SS
	CW-400*	Column Wrap Anchor	4x(12-20)x5/8	N/A	P/G/SS
	PA-100	Single Bolt Positioning Anchor	4x6	N/A	P/G/SS
	PA-200	Two Bolt Positioning Anchor	4x8	N/A	P/G/SS
	PA-300	Weld On Positioning Anchor	4x6	N/A	SS HOOP RAW PLATE